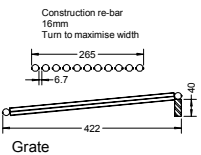
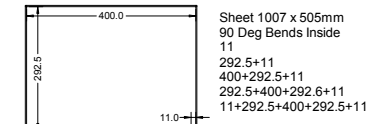
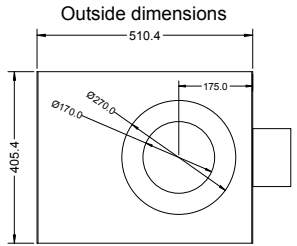


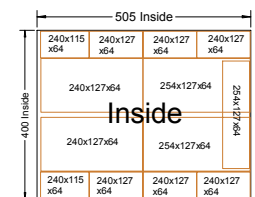
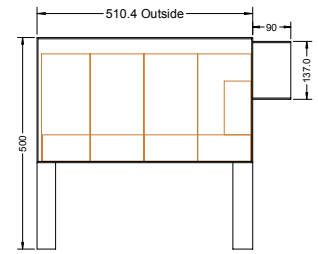
Body 1007 x 505



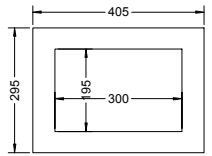
Grate



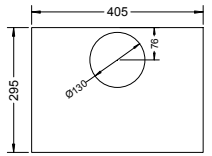
Outside dimensions



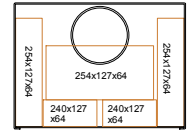
Inside



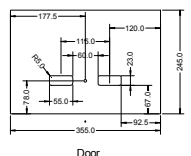
Door Frame



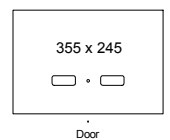
End Plate



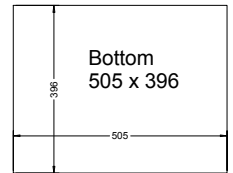
Cooking hole supports rings Material 2mm mild steel



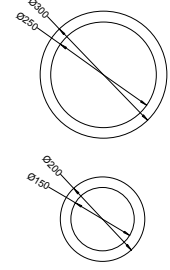
Door



Door



Bottom 505 x 396

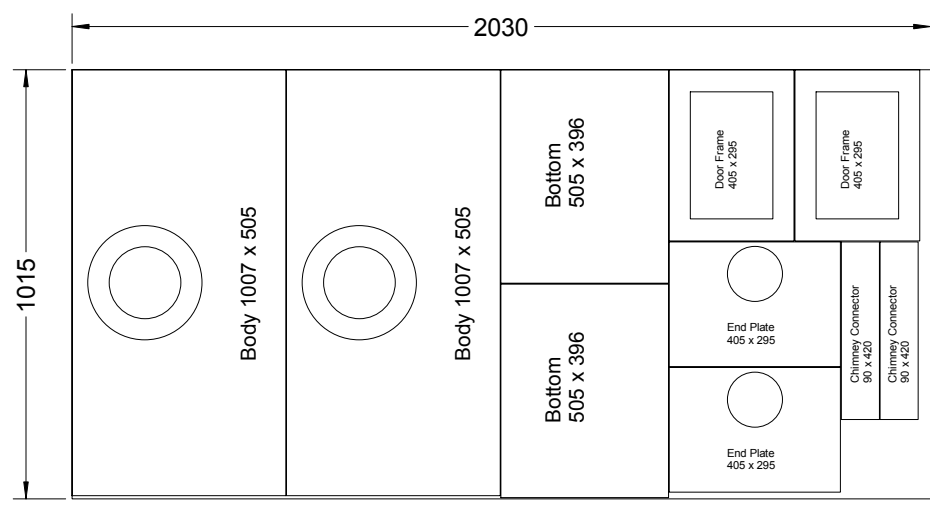
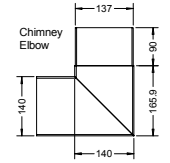
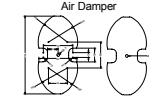
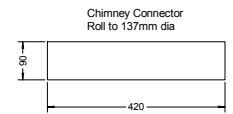


# Safed Garmi Сафед Гармй

Model 1 A and B  
Version 1.2  
28 April 2016  
C Pemberton-Pigott

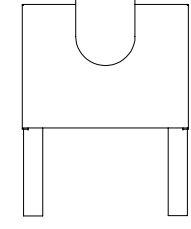
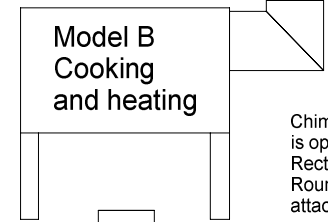
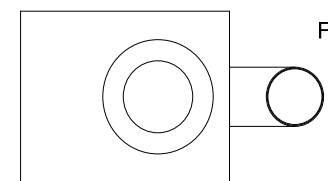
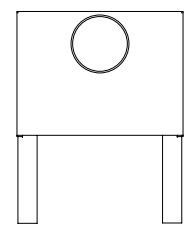
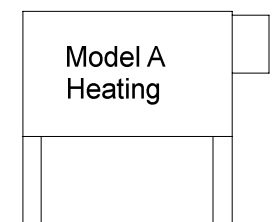
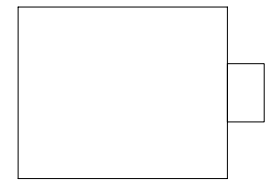
Materials:  
2.7mm Mild Steel Sheet  
High density, high temperature firebricks  
Brick size 254x127x64 or 248x124x64

Instructions:  
Inside bends are sharp  
Chimney connector is 90 x 420mm, rolled and welded  
End plates are placed ON the ends, not inside the ends  
The leg height is to suit local customer preferences  
The bricks are placed in loose for service by the customer  
Door hinges: 2x10mm bullet hinges welded on the right side  
Door latch on left as appropriate - door must seal all round



Cutting layout for standard mild steel sheet  
2.7 x 2030 x 1015 mm  
Minimum size 2004 x 1007  
assuming a 2 mm kerf

Safed Garmi  
Сафед Гармй



For 140mm chimney

Chimney connection is optional:  
Rectangular for heating wall  
Round for external or attached elbow

Safed Garmi  
Сафед Гармй

v1.2